



CEMBRE

NEW SPLIT CABLE ENTRY SYSTEMS **EWO** SERIES



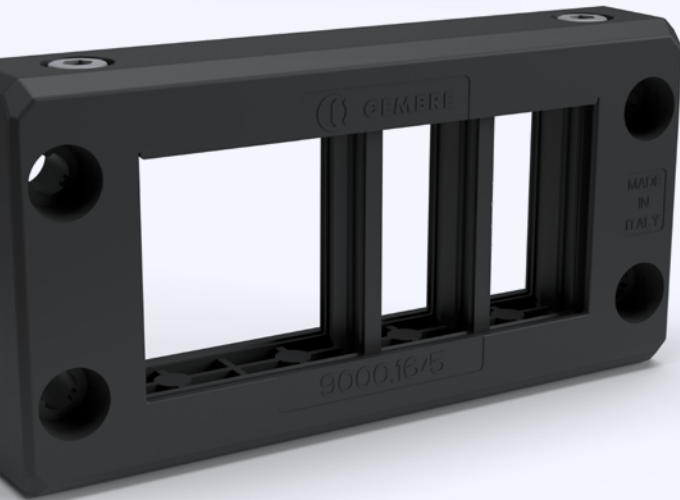
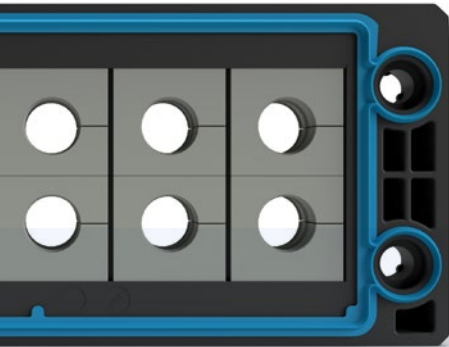
EWO[®]
EASY WIRE ORGANIZER



CHOOSE CONVENIENCE AND SAFETY WITH EWO CABLE ENTRY SYSTEMS!

- **Plug & Fix:** quick installation on predetermined cables for signal distribution, sensors, power supply
- **Easy to use:** frame can be fitted after laying the cables, which can also be secured with grommets in the final phase of machine wiring
- **For industrial automation:** ideal for applications in industrial automation, for cable management on machinery
- **Safety without compromise:** extremely safe and protected (IP66) even without an additional external seal
- **Grommets are perfectly enclosed by the frame,** with no protrusions, ensuring IP66 protection and cable sealing in accordance with EN62444

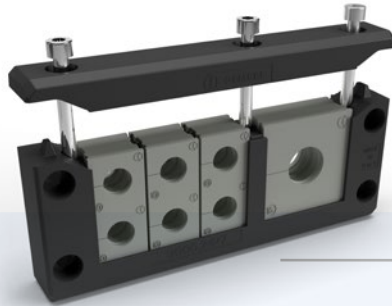




- **Slim and space-saving** thanks to the compact design and the absence of an external seal (available as an accessory)
- **Fast and flexible screw fastening:** anti-fall system for easier installation
- **Frame fixing system** using screws on nuts, deep-drawn holes or rivets
- **High quality material:** reinforced PA6.6 fibreglass frame with stainless steel screws and clamping nuts
- **180° of simplicity:** grommets can be mounted freely, without having to be locked in place, and without worrying about the direction of installation

LOTS OF GREAT REASONS FOR CHOOSING EWO

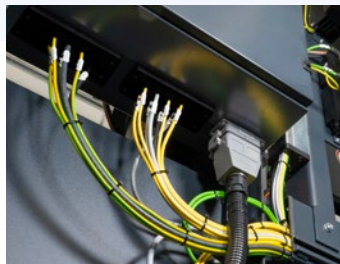
Frame can be fitted after laying the cables, which can also be secured with grommets in the final phase of machine wiring



Quick installation on predetermined cables for signal distribution, sensors, power supply



Ideal for applications in industrial automation, for cable management on the machine



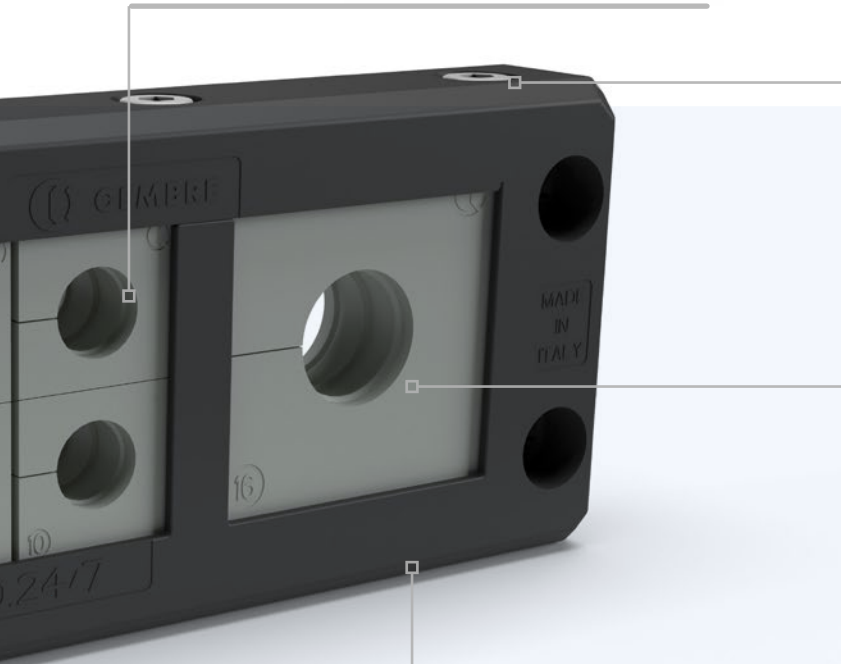
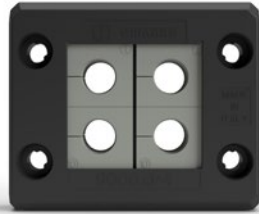
Extremely safe and protected (IP66) thanks to the special overmoulded seal which does not require an external seal



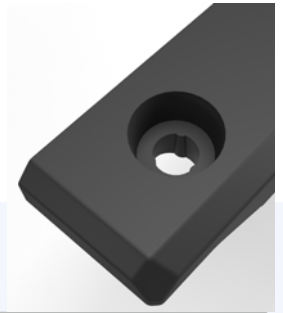
Slim and space-saving thanks to the compact design and the absence of an external seal.



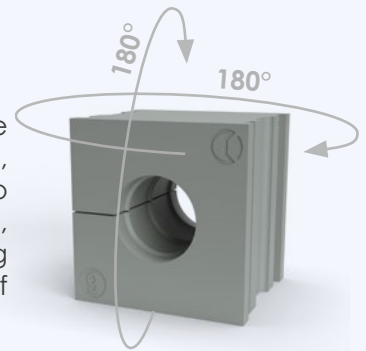
Grommets are perfectly enclosed by the frame, without protrusions, guaranteeing IP66 protection and cable sealing in accordance with EN62444



Fast and flexible screw fastening: anti-fall system for easier installation



Grommets can be mounted freely, without having to be locked in place, and without worrying about the direction of installation



Reinforced PA6.6 frame
fibreglass stainless steel screws and clamping nuts



Frame fixing system using screws on nuts, deep-drawn holes or rivets



THE CABLE ENTRY SYSTEM LINE

Split cable entry systems for predetermined cables

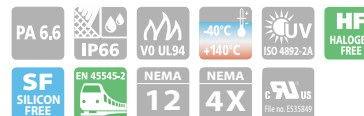


Cable gland mm	Metal Plate Perforation mm	No. grommets	SPLIT CABLE ENTRY SYSTEMS FOR PREDETERMINED CABLES				
			Square	Rectangular	Reduced Rectangular	Round	
75 x 61	43 x 43	4	9000.Q/4	-	-	-	
75 x 61	43 x 43	1	9000.Q/1	-	-	-	
99.5 x 61	65 x 46	6	-	9000.10/6	-	-	
99.5 x 61	65 x 46	3	-	9000.10/3	-	-	
120 x 61	86 x 36/46	8	-	9000.16/8	-	-	
120 x 61	86 x 36/46	5	-	9000.16/5	-	-	
120 x 61	86 x 36/46	2	-	9000.16/2	-	-	
147 x 61	112 x 36/46	10	-	9000.24/10	-	-	
147 x 61	112 x 36/46	7	-	9000.24/7	-	-	
147 x 61	112 x 36/46	4	-	9000.24/4	-	-	
75 x 42	43 x 24	2	-	-	9000.R/2	-	
99.5 x 42	65 x 24	3	-	-	9000.R/3	-	
120 x 42	86 x 24	4	-	-	9000.R/4	-	
147 x 42	112 x 24	5	-	-	9000.R/5	-	
50 x 45.5	Ø 25.4	1	-	-	-	9100.M25	9100.M25N
50 x 45.5	Ø 32.5	1	-	-	-	9100.M32	9100.M32N
72 x 72	Ø 50.5	1	-	-	-	9100.M50/1	9100.M50/1N
72 x 72	Ø 50.5	4	-	-	-	9100.M50/4	9100.M50/4N
72 x 72	Ø 64.0	1	-	-	-	9100.M63/1	9100.M63/1N
72 x 72	Ø 64.0	4	-	-	-	9100.M63/4	9100.M63/4N

Available colours:
 • Black (RAL 9005) ■

Available colours:
 • Grey (RAL 7035) ■
 • Black (RAL 9005) ■

Frame material: Glass-fibre reinforced Polyamide PA6.6
Light blue overmoulded seal material: Thermoplastic elastomer (TPE)
Frame fastening screws material: Stainless steel (M5x55) Class A2
Self-extinguishing class V0 (UL 94)
Temperature range: -40°C to +140°C (static)
Colour: Black Ral 9005; Grey RAL 7035 (for round version)



ACCESSORIES



Grommets



Type A Grommet 20x20.6 mm	No. holes	Ø Cable mm	Type A Grommet 20x20.6 mm	No. holes	Ø Cable mm
9.AD0	0	-	9.A4D2	4	2-3
9.A1D1	1	1-2	9.A4D3	4	3-4
9.A1D2	1	2-3	9.A4D4	4	4-5
9.A1D3	1	3-4	9.A4D5	4	5-6
9.A1D4	1	4-5	9.A4D6	4	6-7
9.A1D5	1	5-6			
9.A1D6	1	6-7			
9.A1D7	1	7-8			
9.A1D8	1	8-9			
9.A1D9	1	9-10			
9.A1D10	1	10-11			
9.A1D11	1	11-12			
9.A1D12	1	12-13			
9.A1D13	1	13-14			
9.A1D14	1	14-15			
9.A1D15	1	15-16			
9.A1D16	1	16-16.5			
9.A1D17	1	16.5-17			




Type B Grommet 41x41 mm	No. holes	Ø Cable mm
9.BD0	0	-
9.B1D16	1	16-17
9.B1D17	1	17-18
9.B1D18	1	18-19
9.B1D19	1	19-20
9.B1D20	1	20-21
9.B1D21	1	21-22
9.B1D22	1	22-23
9.B1D23	1	23-24
9.B1D24	1	24-25
9.B1D25	1	25-26
9.B1D26	1	26-27
9.B1D27	1	27-28
9.B1D28	1	28-29
9.B1D29	1	29-30
9.B1D30	1	30-31
9.B1D31	1	31-32
9.B1D32	1	32-33
9.B1D33	1	33-34
9.B1D34	1	34-35

Type A Grommet 20x20.6 mm	No. holes	Ø Cable mm
9.A2D2	2	2-3
9.A2D3	2	3-4
9.A2D4	2	4-5
9.A2D5	2	5-6
9.A2D6	2	6-7



Type A Grommet 20x20.6 mm	No. holes	Ø Cable mm
9.A2D7	2	7-8
9.A2D8	2	8-9

Available colours:

- grey (RAL 7004) 
- Black (RAL 9005) 

Blindplugs



Blindplugs	Ø Insert mm	Ø Head mm	L Insert mm
9005.D2	2	4	20
9005.D3	3	5	20
9005.D4	4	6	20
9005.D5	5	7	20
9005.D6	6	8	20
9005.D7	7	9	20
9005.D8	8	10	15
9005.D9	9	11	15
9005.D10	10	12	15
9005.D11	11	13	15
9005.D12	12	14	15
9005.D13	13	15	15
9005.D14	14	16	15
9005.D15	15	17	15
9005.D16	16	18	15
9005.D17	17	19	15

Split bushing



Split bushing	Pitch mm	Wrench mm
9110.M25	M25x1.5	32
9110.M25N	M25x1.5	32
9110.M32	M32x1.5	40
9110.M32N	M32x1.5	40
9110.M50	M50x1.5	64
9110.M50N	M50x1.5	64

Closing plate



Closing plate	Dimensions mm	Metal Plate Perforation mm
9010.24	148.5 x 55.5	112 x 36/46
9010.16	121.5 x 55.5	86 x 36/46
9010.10	101.5 x 55.5	65 x 46
9010.Q	76.5 x 55.5	43 x 43

Push-fit mounts



Push-fit mount	Dimensions mm	Metal Plate Perforation mm
9020.24	155 x 83	112 x 36/46
9020.16	128 x 83	86 x 36/46
9020.10	107 x 83	65 x 46
9020.Q	68 x 83	43 x 43

External seal



External seal	For cable gland Type	Dimensions mm
9006.Q	9000.Q	72 x 60
9006.10	9000.10	98 x 60
9006.16	9000.16	118 x 60
9006.24	9000.24	145 x 60
9006.R/2	9000.R/2	72 x 41
9006.R/3	9000.R/3	98 x 41
9006.R/4	9000.R/4	118 x 41
9006.R/5	9000.R/5	145 x 41



Cod. 6263091



www.cembre.com



CEMBRE S.p.A.
via Serenissima, 9
25135 Brescia
Italy
Ph +39 030 36921
ufficio.vendite@cembre.com
sales@cembre.com

CEMBRE Ltd.
Dunton Park,
Kingsbury Road,
Curdworth, Salford Coldfield,
West Midlands, B76 9EB
United Kingdom
Ph +44 01675 470440
sales@cembre.co.uk

CEMBRE S.a.r.l.
22 Avenue Ferdinand
de Lesseps
91420 Morangis Cedex,
France
Ph +33 01 60 49 11 90
info@cembre.fr

CEMBRE España S.L.U.
Calle Verano 6 y 8
Pl Las Monjas
28850 Torrejón de Ardoz
Madrid - Spain
Ph +34 91 4852580
comercial@cembre.com

CEMBRE GmbH
Geschäftsbereich
Energie- und Bahntechnik
Heidemannstr. 166
80939 Munich
Germany
Ph +49 89-3580676
info@cembre.de

CEMBRE GmbH
Geschäftsbereich
Industrie und Handel
Boschstraße 7
71384 Weinstadt
Germany
Ph +49 7151-20536-60
info-w@cembre.de

CEMBRE Inc.
Raritan Center Business Park
300 Columbus Circle-S.F.
Edison, NJ 08837 USA
Ph +1 (732) 225-7415
sales.us@cembre.com
Midwest Office
1051 Perimeter Dr #610
Schaumburg, IL 60173

